

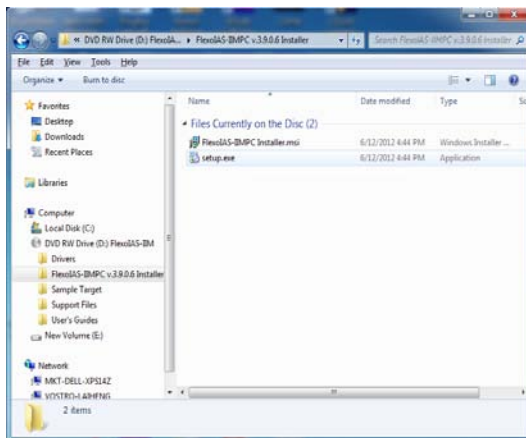


FlexoIAS™-II Installation and Quick Start Guide

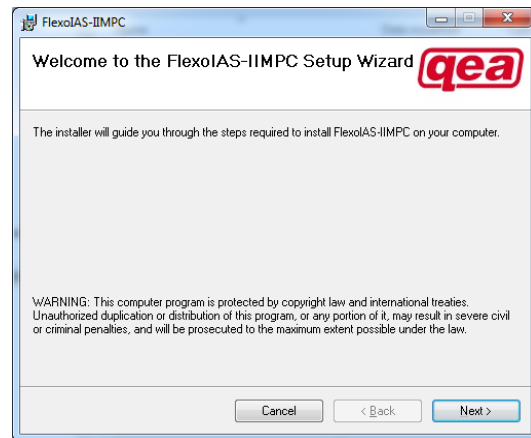
1. Installing the FlexoIAS-II Software

To install the FlexoIAS-II software, follow the steps below. Note that you must install the software before plugging in the measurement head.

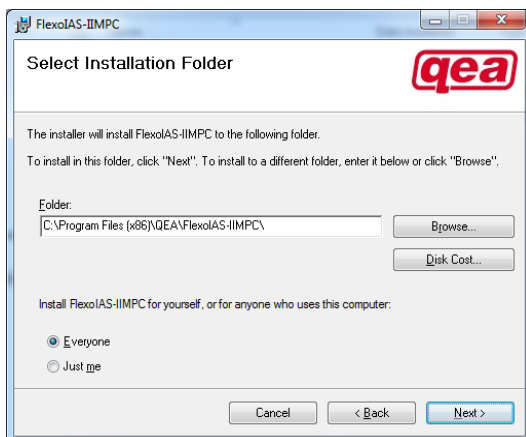
To begin, insert the *FlexoIAS-II Companion CD* into the CD-ROM drive of your PC, and open the *FlexoIAS-II Installation* file. Then continue as follows.



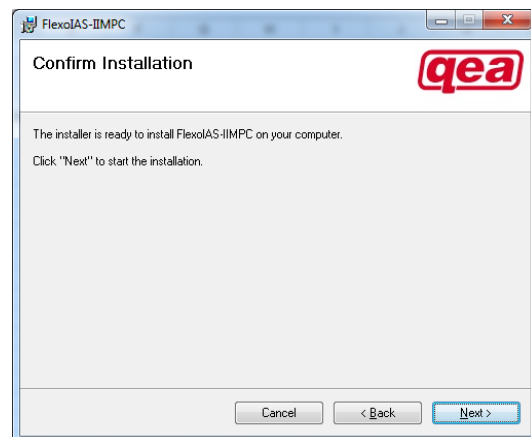
1. Double click on *setup.exe*. The installer will start automatically.



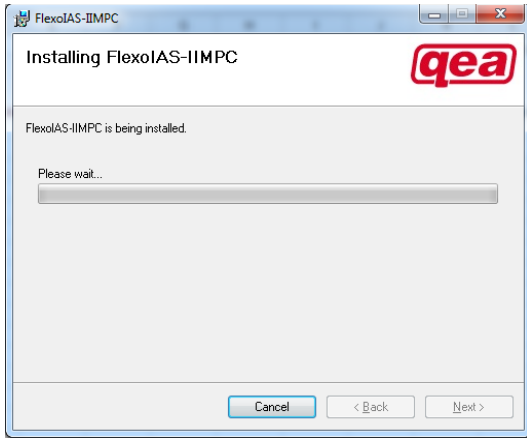
2. Click Next to begin installing the FlexoIAS-II software.



3. Select the installation location and user access privileges and click Next.



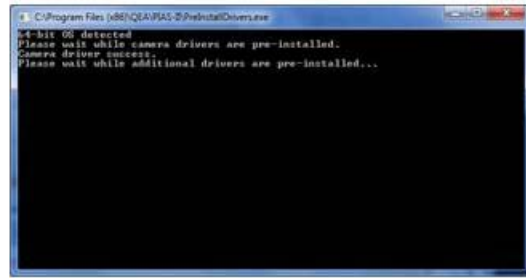
4. Click Next to start installation.



5. Wait while the software is installed. If a User Account Control window appears, select *Yes* to allow the program to make changes to your computer.



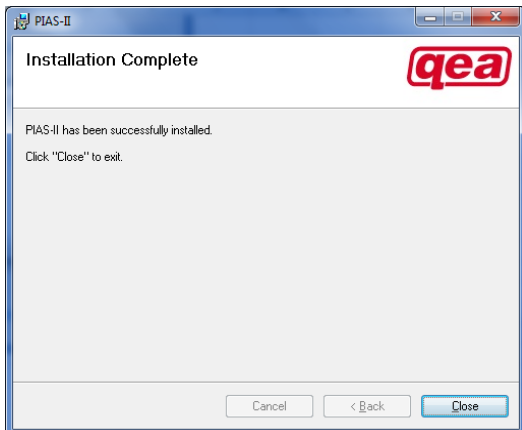
7. If prompted, select *Install* to install the software from SENSOR TECHNOLOGY CO.,LTD



6. The installer will automatically detect the operating system and install the appropriate drivers.



8. If prompted, select *Install* to install the software from Maxim Integrated Products.



9. Click *Close* to exit the installation

2. Installing the FlexoIAS™-II Measurement Head

Note that the FlexoIAS-II software must be installed before the measurement head is plugged in. The software will not function unless the measurement head is plugged in and functioning.

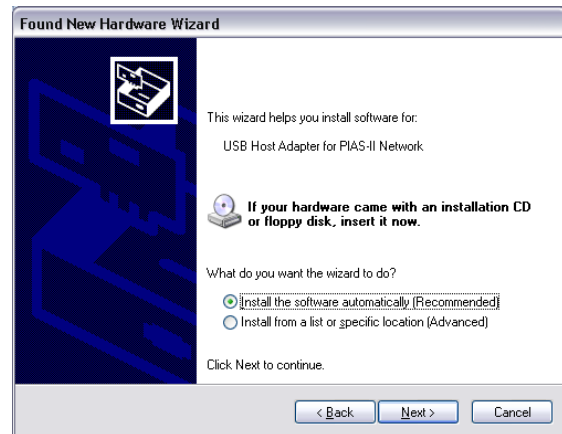
For Windows 7 Installations, the drivers are loaded automatically when the measurement head is plugged in.

To install the FlexoIAS-II measurement head under Windows XP, follow the steps below.

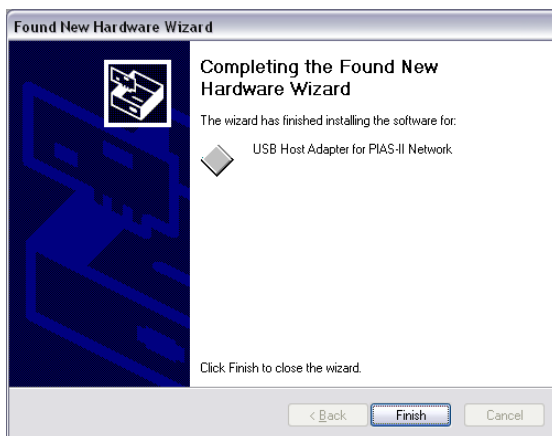
First, plug the FlexoIAS-II measurement head into an open USB port on your PC. Windows will recognize the head and open the *Found New Hardware* wizard. Then continue as follows.



1. The wizard will ask whether you want Windows to search for software. Select “No, not this time” and click *Next*.



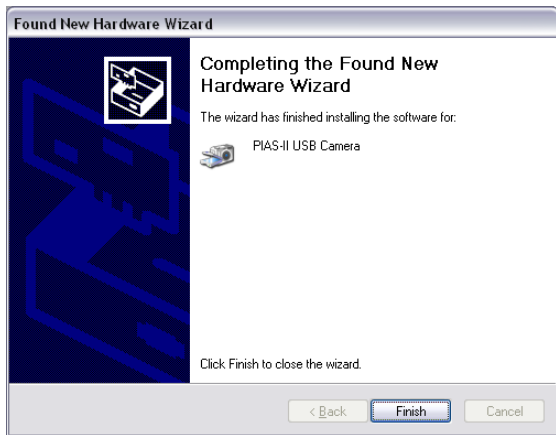
2. In the next dialog box, select “Install the software automatically (Recommended)” and click *Next*.



3. Click *Finish* to complete the installation.
 - Repeat steps 1 and 2 when the hardware wizard reappears, then continue to step 4.



4. Now a dialog box will appear containing a warning about software compatibility with Windows XP. Click *Continue Anyway*.



5. Click *Finish* to complete the installation.
The FlexoIAS-II software is now installed and ready to use

See also *FlexoIAS™-II User's Guide*
on the companion CD
or
Contact QEA at support@qea.com